

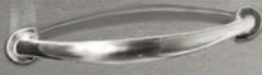
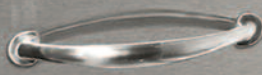
Artisan™

Professional Grills by Alfresco™





Artisan



Artisan

Your dream outdoor kitchen may be more affordable than you think

Before Artisan, your choice for an outdoor kitchen came down to premium American-made brands at a high cost, or much less expensive (and much lower quality) imports.

At Artisan, we strive to offer affordable luxury with all the quality and features you expect in premium American-made appliances and accessories, at prices normally reserved for imports.

Our years of experience building equipment for some of the finest restaurants, and our state-of-the-art manufacturing facility, allow us to offer an unprecedented mix of quality and value.

How do Artisan Professional Grills by Alfresco compare with the others?

With materials and construction, functional design and meticulous craftsmanship surpassed by none, Artisan Professional Grill's are tough enough to withstand the rigors of living outdoors.



Artisan Exclusive Heat Delivery System

Heavy-duty 304 18-8 stainless burners create evenly distributed extreme high heat to the cooking surface.

- 20,000 BTU rated main burners
- 300 Series stainless steel "U" burners with dual rows of clean and efficient combusting double-lanced ports on three sides
- Best-in-class warranty



Made in the U.S.A

Made from commercial-grade 304 18-8 stainless steel, with durable heli-arc hand-welded seams.



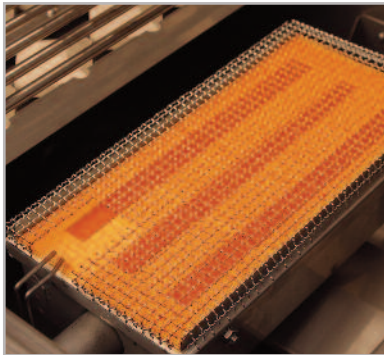
Precision Flame Control

Artisan's ergonomic grill knobs and brass valves, are designed for precision control.



Refractive Locked-in-Place Ceramic 5-way Heat Distributing Briquettes

A special pyramid shape delivers intense even heat to the cooking surface. Radiant tray locks briquettes in place. Turn tray over and fire burners on high with lid closed to self-clean.



Sear Zone™ Infrared Burner

Optional interchangeable infrared burner. 20,000 BTU rated 100% combusting ceramic surface for intense even heat and authentic steakhouse results. Cooks 50% faster with virtually no flare-ups. Sear Zone™ Burner Model: ART-ISB. Grate for Sear Zone™ Model: ASZG



Redesigned Switches

Stainless steel push-buttons for ignition and lighting are ergonomically integrated into the front control panel.



Control Panel Lighting

Ambient blue LED front panel lighting illuminates knobs, creating a rich beam of light exactly where you need it. (Professional Series only)



Hood Lift Assist

Heavy-duty stainless steel spring assist makes for a smooth one-finger open and close of the grill hood.



Flush Rear Infrared Rotisserie Burner

32", 36", and 42" model grills come with a flush-mounted 1500° rear ceramic infrared rotisserie burner. (Professional Series only)



Stainless Steel Cooking Grates

Heavy-duty stainless steel cooking grates with a special non-stick electro-polished finish are positioned over briquette and "U" burner sections.



Adjustable Food Warming and Grilling Rack

Two-position adjustable warming rack stores up and out of the way when rotissing. Ideal for above-grilling-surface holding and cooking.



Halogen Work Light

Integrated high-intensity halogen work lights on 32", 36", and 42" models. Light lens is easily removable without the use of tools. (Professional Series only)



Integrated Thermometer

Standard on every Artisan grill, this convenient thermometer is built into the hood for accurate oven roasting temperatures.



Exclusive Heat Protected Wiring

Electrical wires are each encapsulated their full length with a 600° heat-resistant silicone sleeve, and all electric connectors are protected with a silicone boot made of the same heat-resistant silicone.



Exclusive Control Panel Air-Cooling Curtain

A special air-cooling plenum blasts a curtain of cool air that flows up between the front control panel and firebox, keeping the front panel and bullnose safe to the touch. This also assists in protecting the electronics.



Heavy-Duty 50-lb. Torque Rotisserie Motor

Connects to either end of the rotisserie spit turning foods smoothly and consistently. (Optional on American Eagle Series)



42"

Artisan Professional Series

- Three 20,000 BTU rated main U-burners
- 15,000 BTU rated infrared rear rotisserie burner
- Total rated BTUs: 75,000
- 110V electronic ignition
- Bright halogen work lights
- 2-position warming rack
- Fold-down side shelves
- Seamless door design
- Double magnets on cart doors
- Optional Sear Zone™ available
- Optional sear grate available

Models: ARTP-42 (Built-in) and ARTP-42C (Cart model)
Cart model ships fully assembled



36"

Artisan Professional Series

- Three 20,000 BTU rated main U-burners
- 15,000 BTU rated infrared rear rotisserie burner
- Total rated BTUs: 75,000
- 110V electronic ignition
- Bright halogen work lights
- 2-position warming rack
- Fold-down side shelves
- Seamless door design
- Double magnets on cart doors
- Optional Sear Zone™ available
- Optional sear grate available

Models: ARTP-36 (Built-in) and ARTP-36C (Cart model)
Cart model ships fully assembled



32"

Artisan Professional Series

- Three 20,000 BTU rated main U-burners
- 15,000 BTU rated infrared rear rotisserie burner
- Total rated BTUs: 75,000
- 110V electronic ignition
- Bright halogen work lights
- 2-position warming rack
- Fold-down side shelves
- Seamless door design
- Double magnets on cart doors
- Optional Sear Zone™ available
- Optional sear grate available

Models: ARTP-32 (Built-in) and ARTP-32C (Cart model)
Cart model ships fully assembled



36"

Artisan American Eagle Series

- Three 20,000 BTU rated main U-burners
- Total rated BTUs: 60,000
- 9V electronic ignition
- Warming rack
- Optional: Rotis Accessory ART-ROT36 (includes motor, spit, and forks only)
- Fold-down side shelves
- Seamless door design
- Double magnets on cart doors
- Optional Sear Zone™ available
- Optional sear grate available

Models: AAEP-36 (Built-in) and AAEP-36C (Cart model)
Cart model ships fully assembled



32"

Artisan American Eagle Series

- Three 20,000 BTU rated main U-burners
- Total rated BTUs: 60,000
- 9V electronic ignition
- Warming rack
- Optional: Rotis Accessory ART-ROT32 (includes motor, spit, and forks only)
- Fold-down side shelves
- Seamless door design
- Double magnets on cart doors
- Optional Sear Zone™ available
- Optional sear grate available

Models: AAEP-32 (Built-in) and AAEP-32C (Cart model)
Cart model ships fully assembled



26"

Artisan American Eagle Series

- Two 20,000 BTU rated main U-burners
- Total rated BTUs: 40,000
- 9V electronic ignition
- Warming rack
- Fold-down side shelves
- Seamless door design
- Double magnets on cart doors
- Optional: Rotis Accessory ART-ROT26 (includes motor, spit, and forks only)
- Optional Sear Zone™ available
- Optional sear grate available

Models: AAEP-26 (Built-in) and AAEP-26C (Cart model)
Cart model ships fully assembled



Artisan Pizza Oven

- Flexible, controllable temperature options allow users to roast, bake, iron-skillet sear, and of course, cook perfect Neapolitan pizzas.
- All 30418-8 heli-arc welded stainless steel
- 7" high front opening
- Removable sit-in-place stainless steel front oven door
- 447 sq. in. of cooking space
- Preheats in 15 minutes, and reaches temperatures up to 800°F
- 3/4" thick high-quality ceramic slab hearth and ceiling for even intense radiating 16,000 BTU rated stainless steel U-burner under ceramic slab hearth
- Rear burner accelerates preheat time by distributing heat up to the ceramic ceiling slab for powerful top-down heat
- Natural air-cooling plenum keeps control panel cool to the touch
- Countertop installation with rear exhaust
- Removable top
- Halogen oven light
- Solid hot-surface ignition system
- Heat-protected silicone-sleeved wiring

Model: ARTP-PZA



Pizza Oven Cart

Our sturdy pizza oven cart creates mobility for your pizza oven when counter space is at a premium. AXE-PZA-CART-01



Pizza Oven Cover

Protect your investment from the elements when you're not cooking with Artisan's premium high-density canvas pizza oven cover with embroidered logo. ARTP-PZACV



Artisan Outdoor Refrigerator

- Outdoor rated; UL certified; DOE certified
- Artisan Professional handle
- Exterior constructed with 304 stainless steel
- Front, bottom ventilation for freestanding or built-in applications
- Graphite interior with interior LED lighting
- Digital thermostat for precision temperature control
- Reversible door swings
- Standard lock
- Automatic defrost
- Stainless steel shelving
- 5.5 cubic foot capacity

Models: ART-BC24 and ART-BC24-Kit (Handle and Logo Kit)



Accessories

Complete your dream outdoor kitchen!

Access Doors and Drawers

Artisan access doors and drawers are made of 304 stainless steel exteriors for long life, easy maintenance, and a perfect match to your grill. Doors feature magnetic closures and an optional interior shelf. Drawers feature full-length ball bearing slides for smooth operation.



ARTP-2DR-17SC (ARTP-2DR) 17" Two Drawer Set
ARTP-3DR-17SC 17" Three Drawer Set
ARTP-DDC-32SC (ARTP-DDC) 32" Door and Drawers
ARTP-DDC-36SC 36" Door and Drawers



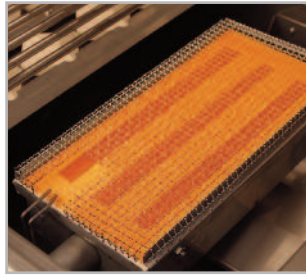
ARTP-17DL (ARTP-SDL) 17" Single Left Door
ARTP-17DR (ARTP-SDR) 17" Single Right Door
ARTP-26DL 26" Single Left Door
ARTP-26DR 26" Single Right Door
ARTP-30DD (ARTP-DD) 30" Double doors
ARTP-32DD 32" Double Doors
ARTP-36DD 36" Double Doors
ARTP-42DD 42" Double Doors

ARTP-DS17 (ARTP-DS) 17" Interior Door Bin
ARTP-DS26 26" Interior Door Bin (X2 Sold Individually)
ARTP-DS32 32" Interior Door Bin (X2 Sold Individually)
ARTP-DS36 36" Interior Door Bin (X2 Sold Individually)
ARTP-DS42 42" Interior Door Bin (X2 Sold Individually)



Sear Zone™ Infrared Burner

Optional interchangeable infrared burner.
Sear Zone™ Burner Model: ART-ISB.
Grate for Sear Zone™ Model: ASZG



Side Burners

Artisan's single side burner is the perfect complement to your grill. Simple drop-in installation for your island, or use with a freestanding grill with the optional side shelf accessory. Features a brass burner rated at 15,000 BTUs, AA battery powered ignition, and a hinged stainless steel cover.

New! Artisan's new double side burner is a premium cooking complement to your Artisan grill. Featuring two 15,000 BTU rated brass burners with electronic ignition, and recessed top with stainless steel cover.

Single Side Burner Model: ART-SB1
Cart Mount for ART-SB1: ARTC-SBM-01
Dual Side Burner Model: ARTP-SB2
Cart Mount for ARTP-SB2: ARTPC-SB2M-01



Trash Center and Chute

The most convenient way to deal with waste in your outdoor kitchen. Trash Center features full-length ball bearing slides and holds a standard 10-gallon trash can (not included). Waste Chute mounts in countertop above for easy access to trash can below and features a sliding cutting board.

ARTP-TC-15SC (ART-TC) Trash Center
(can not included)
ARTP-TC2-20SC Two-Can Trash Center
(cans not included)
ARTP-PWC Prep/Waste Chute



Accessories

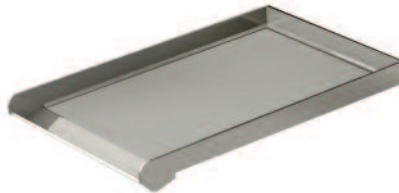
Insulated Ice Bin

Keep it cool longer with premium seals and commercial insulation. This extra-deep drop-in ice bin features and Innovative industrial-strength hinge, allowing for easy top-lid removal. ARTP-IC



Griddle Top

Easily nests on top of any Artisan grill or Artisan double side burner giving you even more cooking versatility. ARTP-G



Paper Towel Dispenser

Pivoting front door design conveniently holds and dispenses paper towels. ARTP-TH-17



Wind Guard

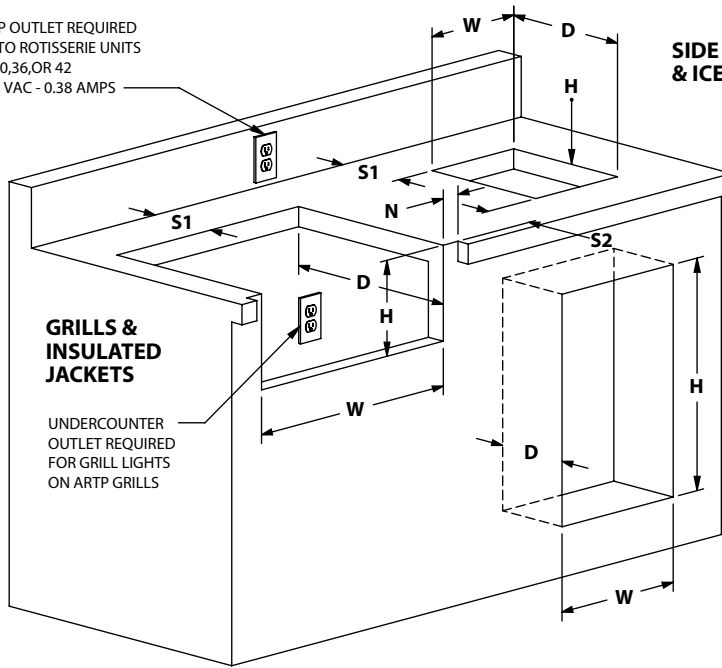
For windy, exposed environments that may affect cooking performance and consistency, our all-stainless steel wind guard integrates perfectly with any Artisan grill.

ARTP-26WS
ARTP-32WS
ARTP-36WS
ARTP-42WS



Specification and Cutouts

COUNTERTOP OUTLET REQUIRED FOR POWER TO ROTISSERIE UNITS
ART-ROT26,30,36,OR 42
POWER: 115 VAC - 0.38 AMPS



SIDE BURNER, TRASH CHUTE & ICE BIN (H IS HEIGHT OF PRODUCT FROM COUNTERTOP SURFACE)

S2 MEASUREMENT IS MEANT TO ALIGN SHUTE WITH TRASH BIN AND MEASURED FROM THE CABINET FACE.

DOORS, DRAWERS, TRASH CENTER & REFRIGERATOR
(REFRIGERATOR H DISTANCE IS MEASURED FROM FLOOR LEVEL)

GRILLS & INSULATED JACKETS

UNDERCOUNTER OUTLET REQUIRED FOR GRILL LIGHTS ON ARTP GRILLS

MODEL	CUTOUT DIMENSIONS			NOTCH N	SETBACKS		POWER ❶ AMPS	GAS LINE
	W	D	H		S1 (MIN.)	S2		
AAEP-26	24-1/2"	19-3/4"	9-1/2"	7/8"	5-3/4"	~		❸
ARTP / AAEP-32	30-1/2"	19-3/4"	9-1/2"	7/8"	5-3/4"	~	0.71 ❷	❸
ARTP / AAEP-36	34-1/2"	19-3/4"	9-1/2"	7/8"	5-3/4"	~	0.71 ❷	❸
ARTP-42	40-1/2"	19-3/4"	9-1/2"	7/8"	5-3/4"	~	0.71 ❷	❸
ARTJU-26	27-1/4"	23-5/8"	10-1/4"	7/8"	1-5/8"	~		❹
ARTJU-32	33-1/4"	23-5/8"	10-1/4"	7/8"	1-5/8"	~	❹	❹
ARTJU-36	37-1/4"	23-5/8"	10-1/4"	7/8"	1-5/8"	~	❹	❹
ARTJU-42	43-1/4"	23-5/8"	10-1/4"	7/8"	1-5/8"	~	❹	❹
ART-SB1	11"	15"	~	~	1-1/2"	~		❺
ARTP-SB2	12-3/8"	22-3/8"	9-1/4"	7/8"	4-1/4"	~		
ARTP-17DL / -17DR	13-7/8"	~	18-1/2"	~	~	~		
ARTP-26DL / -26DR	23-3/8"	~	18-1/2"	~	~	~		
ARTP-30DD	27-1/4"	~	18-1/2"	~	~	~		
ARTP-32DD	29-3/8"	~	18-1/2"	~	~	~		
ARTP-36DD	33-3/8"	~	18-1/2"	~	~	~		
ARTP-42DD	39-3/8"	~	18-1/2"	~	~	~		
ARTP-DDC-32SC	29-1/2"	19-3/4"	18-1/2"	~	~	~		
ARTP-DDC-36SC	33-1/2"	19-3/4"	18-1/2"	~	~	~		
ARTP-2DR-17SC	14-1/2"	19-3/4"	18-1/2"	~	~	~		
ARTP-3DR-17SC	14-1/2"	19-3/4"	18-1/2"	~	~	~		
ARTP-TC-15SC	12-1/2"	19"	26-1/4"	~	~	~		
ARTP-TC2-20SC	17-1/4"	24-7/8"	26-1/4"	~	~	~		
ARTP-PWC	6-1/4"	8-1/4"	3-5/8"	~	~	4-5/8"		
ARTP-TH-17	14-1/2"	8-3/4"	8-1/2"	~	~	~		
ARTP-IC	22-1/4"	16-3/4"	17-5/8"	~	~	~		
ART-BC24	24"	22-3/4"	32-3/4"	~	~	~		

NOTE ❶ : ALL POWER SUPPLIES SHOWN ARE 115 VAC - 1Ø - 60Hz

NOTE ❷ : POWER REQUIREMENTS FOR ARTP-32, 36, AND 42 INCLUDE LIGHT AND ROTISSERIE POWER TOGETHER. AAEP BBQ'S USE 9 VDC IGNITION, AND DO NOT HAVE LIGHTS.

NOTE ❸ : ALL GAS LINE REQUIREMENTS ARE AS FOLLOWS:
 NG: 1/2" NPT WITH 5" W.C. (HARD PIPED OR FLEX CONNECTION)
 LP: 3/8" ODF WITH 10" W.C. (FOR PORTABLE TANKS)
 LP: 1/2" NPT WITH 10" W.C. (HARD PIPED OR FLEX CONNECTION FOR WHOLE HOUSE RESIDENTIAL LP SYSTEMS)

NOTE ❹ : INSULATED JACKETS ARTJU-26 / 32 / 36 AND 42 DO NOT REQUIRE POWER, AND/OR GAS LINES BY THEMSELVES. ONLY THE GRILLS THEY ARE MEANT TO INSULATE REQUIRE THEM.

NOTE ❺ : ART-SB1 GAS LINE IS 3/8" OD, AND IT IS CONNECTED TO THE EXISTING GRILL WITH THE SUPPLIED GAS FITTINGS.

Artisan

Professional Grills by *Alfresco*

Made in the U.S.A. by Superior Equipment Solutions
1085 Bixby Drive
City of Industry, CA 91745-1704
Toll-Free: 888.383.8800 International: 323.722.7900
Service: (866) 203-5607 Fax: 323.726.4700
www.artisangrills.com

©2020 Superior Equipment Solutions
Catalog design: fusionmarketing.com

Rev. 07.2020

Find us on    